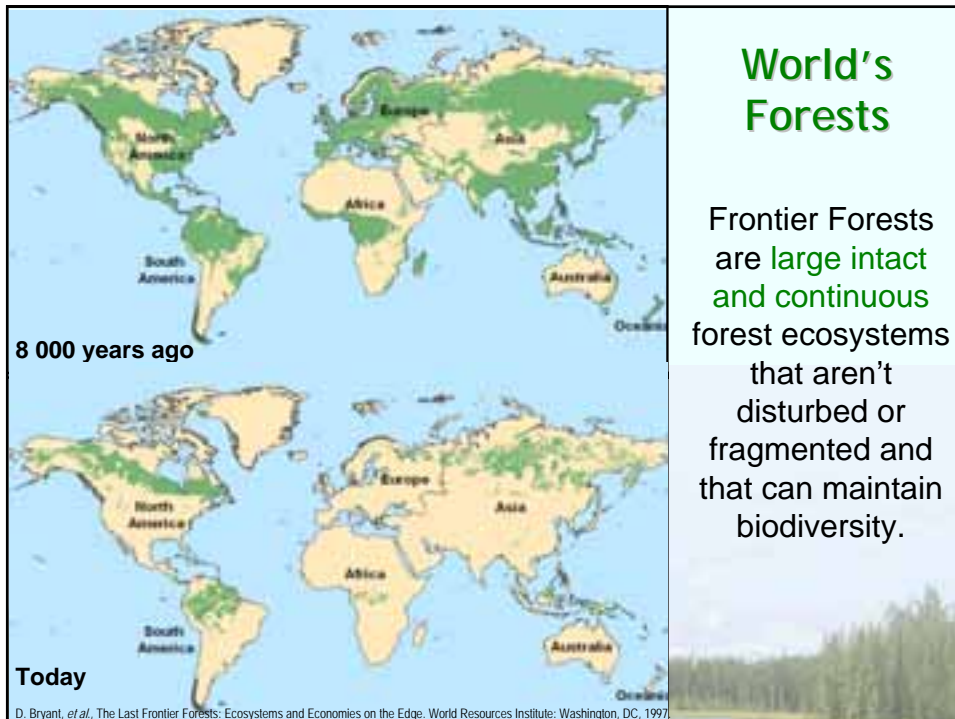
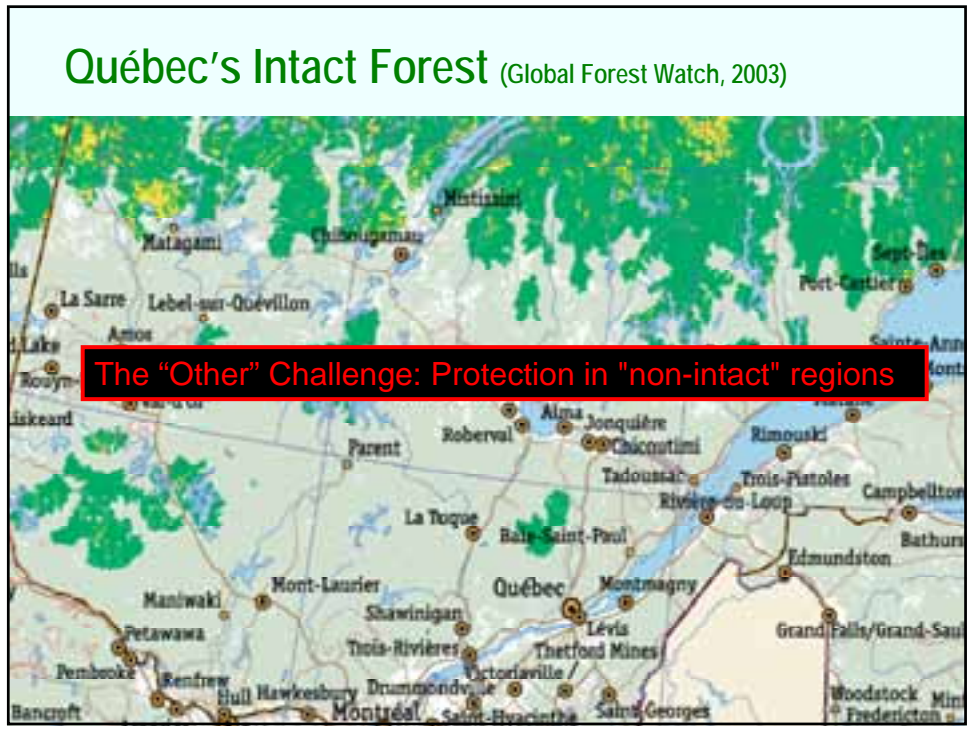
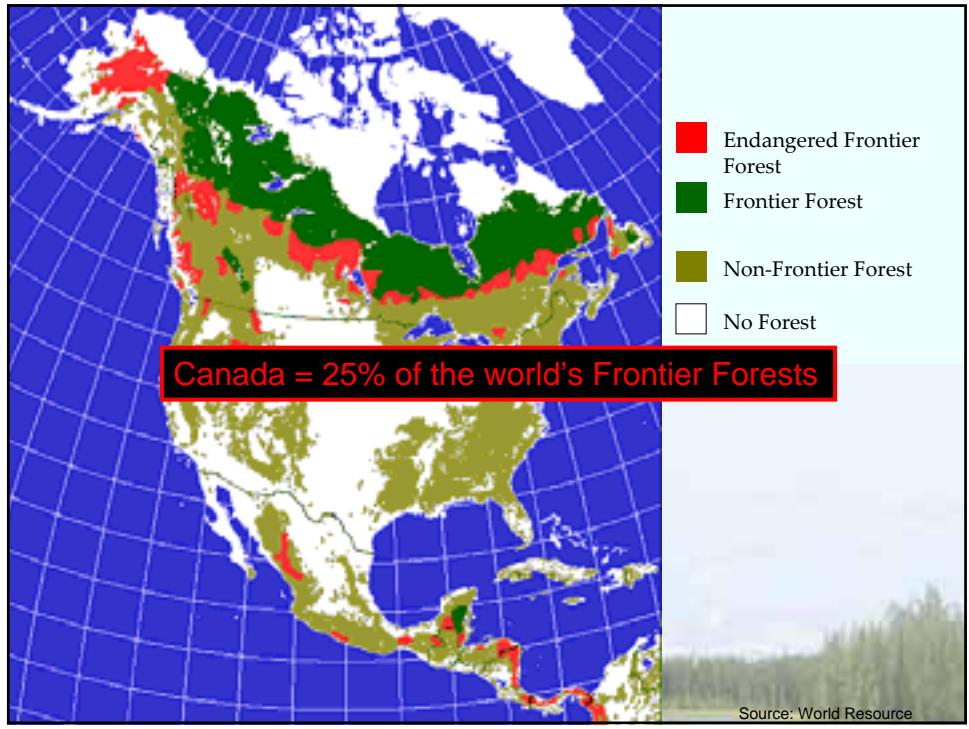


Conciliation des visions de conservation en territoires forestiers aménagés

Conciliation of conservation planning visions in forest management territories

Mélanie Desrochers, professionnelle de recherche au Centre d'étude de la forêt (CEF), UQAM
Daniel Kneeshaw, chercheur au Centre d'étude de la forêt (CEF), UQAM
François Brassard, coordonnateur scientifique à la planification du réseau d'aires protégées, Direction du patrimoine écologique et des parcs (MDDEP)







Towards a shift in Forest Management

- **80's-90's:** Researchers and ENGOs express their concern about over-exploitation of the resource and as a result, a lack of fiber to come
- **1999:** Desjardins & Monderie produce their documentary « L'Erreur Boréale »
- **2002:** Quebec's General Auditor questions our ability to manage the resource. « I can't say that we're not over harvesting our forests »
- **2004:** Coulombe Commission (expert panel) states that change must happen, and rapidly

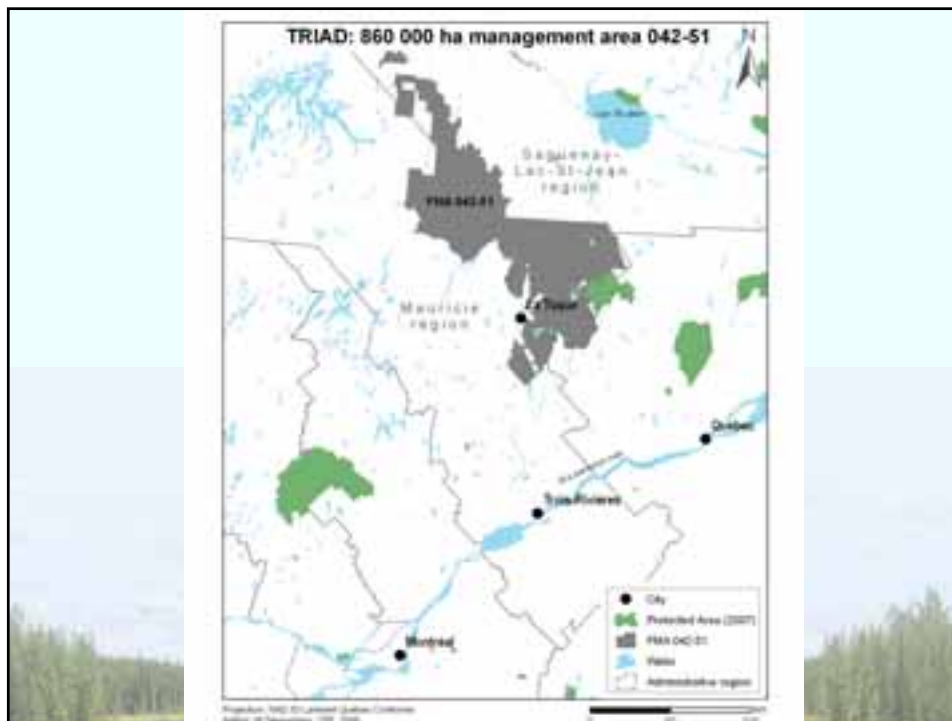
Coulombe Commission: 81 recommendations in 1 slide!

« [...] la Commission est d'avis qu'on assiste à une surexploitation ligneuse des forêts du Québec [...] directement associée au fait que les aménagements sylvicoles, pour une large part, ne sont pas faites de façon adéquate. »
p.148 Rapport Coulombe



Main recommendations:

- Cut better: That ecosystem-based management be central to Québec's public forest management (rec. 4.1)
- Cut less: Reduce the allocation by 20% (rec. 9.2)
- More transparency: Create the position of Forest Auditor, to examine whether forest management is consistent with established quality rules and criteria (rec. 7.8)



TRIAD Context



- 860 000 ha Forest Management Area (FMA)
- All public land |  Tenure
- MNR Pilot Project for Ecosystem Management
- Partnership with  for Scientific Committee
- Functional zoning:
 - Intensive management + ligniculture (super intensive)
~10% + ~ 5%
 - Extensive / ecosystem management ~70%
 - Conservation ~10-15%



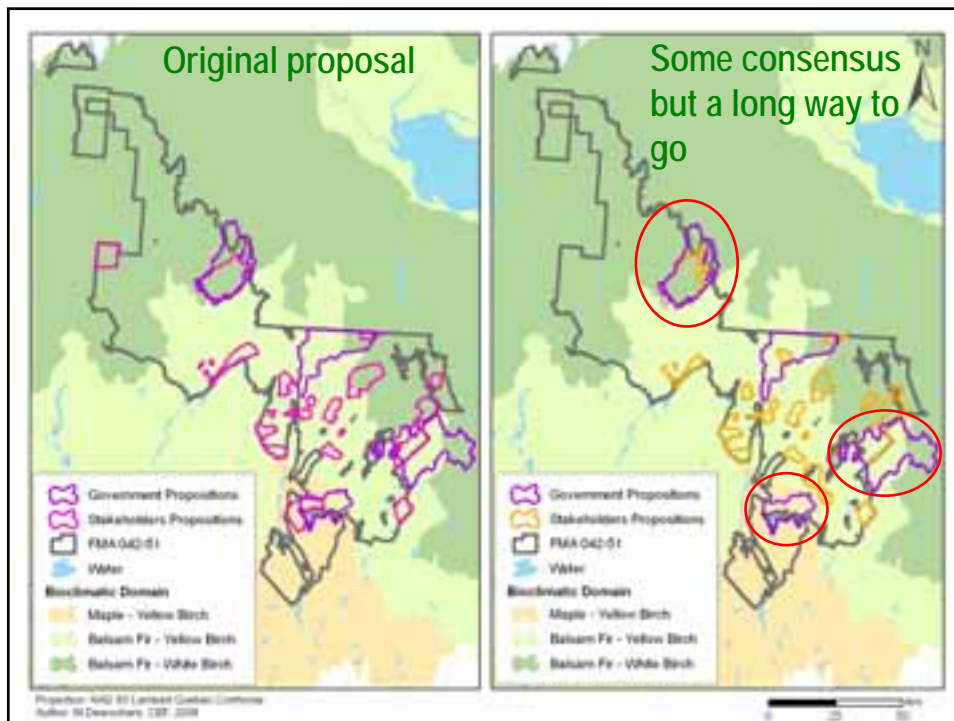
TRIAD Context (continued)

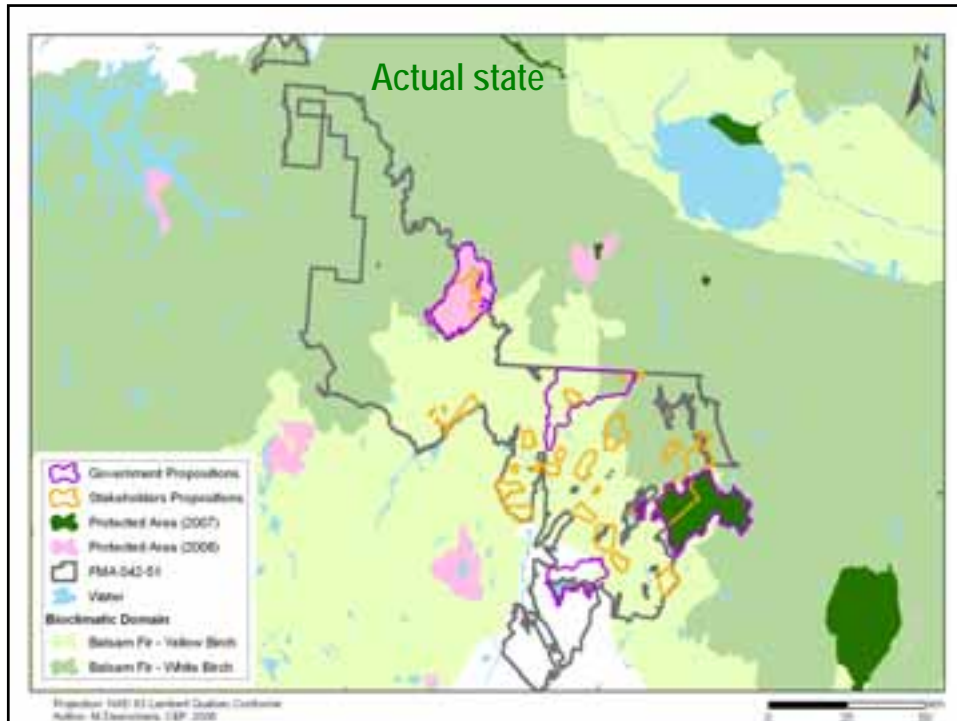


- 24 different stakeholders
 - Outfitters & ZEC (hunting clubs)
 - Hunters/Trappers/Fishers groups
 - Municipalities
 - First Nations
 - AbitibiBowater, Kruger, Tembec and other operators
 - Scientific committee (academics + researchers)
- Presence of an existing Certification Table (CSA)



TRIAD		MDDEP (Gov.)
Protect 8-12% of the FMA	GOAL	Protect 8% of Québec
<ul style="list-style-type: none"> •Put aside "reference forest sites" (control sites for TRIAD) •Protect representative & significant natural areas •Apply strict protection (IUCN cat. I to III) 	OBJECTIVES	<ul style="list-style-type: none"> •Protect Québec's biodiversity through a network of protected areas •Have all ecosystems represented in the network •Wide range of protection (IUCN cat. I to III and then IV to VI)
FMA (860 km ²)	SCALE	Ecological framework (multiscale)
<ul style="list-style-type: none"> •Conservation first (zoning) •Natural disturbances •Represent both productive and non-prod. forests (to obtain all forest ages on all sites) •Stakeholders input 	METHODOLOGY	<ul style="list-style-type: none"> •Based on the Ecological framework – persistent abiotic features of the landscape •Relative intactness •Representativity of all ecosystems •Concept of rarity
Disperse impact on all stakeholders equally (if possible)	PRIORITIES	Mining Claim First





Conservation Waltz

- Discussions “back and forth” between TRIAD and MDDEP
 - 3 meetings to obtain consensus through trade-off (researchers, AbitibiBowater, MDDEP, MRNF)
 - Progression of dialogue from 1st to 3rd meeting
 - Some areas were created (Triton and du Plateau-de-la-Pierriche Biodiversity Reserves)



Towards Conciliation

- Invite ALL stakeholders
- Identify each parties' goals prior to the process
- Initiate dialogue from the beginning
- Understand the spatial scale (different perception of the landscape)
- Take into account the time scale (ex. plantations)
- Openness to discussion and to compromise
- Mediator?

Constructive critiques – from a TRIAD perspective –

- Respect TRIAD's goal which is forest conservation not abiotic permanent features. Life boat zones. The government will have to modify its criterias to integrate "forest" conservation zones.
- Towards a new type of PA? Need a new vision/ complementary approach in order to "get out" of the Ecological Framework / *refuges biologiques*?

M5

Slide 16

M5 Il ne faut pas ménager méthode de sélection (planification) et mode de gestion statut.. Qu'est que tu veux dire ???

MDDEP, 9/12/2008

Constructive critiques – from a MDDEP perspective –

- Planners at the scale of a forest management area (FMA) may not consider planning outside of the borders of their administrative limits : need of ecosystem delimitation
- The PA consultation process shouldn't be lead by industrial interest
- Proposed territories may be too small or not spatially representative of a large land base.
- May be tempted to use PA to settle land use conflicts (ex. Industry vs Outfitters)
- Need to consider all other constraints (mining, hydro, etc.)

Integrated Approach (MDDEP + FMA)

- Ideally: Areas that are spatially representative of a large land base + "forest" conservation zones
- Should not be limited by a percentage (8 or 10 or 15 %) to identify the best benchmark for sustainable forest management
- PA is not the only tool to resolve land use conflicts



Future dilemmas?

- Functional zoning throughout Quebec?
- FSC Certification process
- Completion of the network (post 8%)



Thank you! Merci!

www.cef-cfr.ca

www.projettriade.ca

http://www.mddep.gouv.qc.ca/biodiversite/aires_protegees/index.htm

desrochers.melanie@uqam.ca

